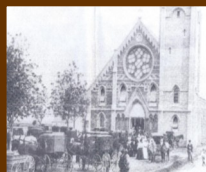


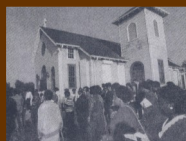
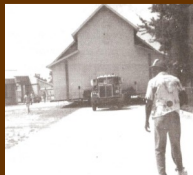
Historic Riverlands

*See the Sites, Feel the Spirit, Hear the Music,
and Taste the Cuisine as we take you back in
time to witness the strength and pride of the
people who lived and worked
Plantation country*

OUR LADY OF GRACE CHURCH, RESERVE, LA.
In Charge of the Josephite Fathers



Bellevue, South, June 13, 1857. In the foreground THE MOST REVEREND
JOSEPH FRANCIS RUMWEL, S.J., ARCHBISHOP of New Orleans.
(Reprint on Page 26, Col. 2)



Historic Sanctuary

Corporate Meetings

Film Presentations

Wedding Accommodations

Library & Gift Shop

Coffee & Snack Parlor

Guided Tours

Fairs, Festivals & Picnics

Creole Cuisine

Time Capsule / Field Trips

Theatrical Plays

Great Filming Location

Present & Future Attractions

TOURS BEGIN MARCH 2012

The Past... Prior to Our Lady of Grace, Catholic African Americans in Reserve, Louisiana worshipped at the segregated St. Peter's Catholic Church. As was typical, two or three pews at the rear of St. Peter's Catholic church were reserved for African Americans. African Americans took communion after the whites; they also were not allowed to participate fully in the life of the parish. For example, they could not sing in the choir or serve as alter boys. In 1936 Father Roderick Auclair, with the help of the community, began building Our Lady of Grace church and rectory for African American parishioners to worship. The church was a 80ft x 40ft wooden structure with a seating capacity of 350

The Present... In 1992, the original Our Lady of Grace Sanctuary was saved from demolition by a two-mile move in the same community. The church is nestled 30 miles north of New Orleans on the East bank of the Mississippi river in Reserve on former Cornland Plantation.

On November 11, 2005 the church was listed on the National Register of Historic Places because of local significant in areas of religion, social history, and ethnic heritage representing an important phenomenon in Southern Louisiana's history.

**Riverlands Christian Center Church
Established 1988**

123 Redemption Way

P.O. Box 2679

Reserve, Louisiana 70084

Telephone: (985) 536-4717

Fax: (985) 536-4889

www.historicriverlands.com

info@historicriverlands.com

